

Nearest Facilities

NEARBY EDUCATIONAL INSTITUTES

- Raasi Engineering College
- Dhanalakshmi college of Engineering
- TMG College of Arts & Science
- Madras Christian College
- Jaigopal Garodia National Hr.Sec. School
- Vivekananda Vidyalaya Hr.Sec.School
- Sairam Engineering College
- Dhaanish Ahmed College of Engineering



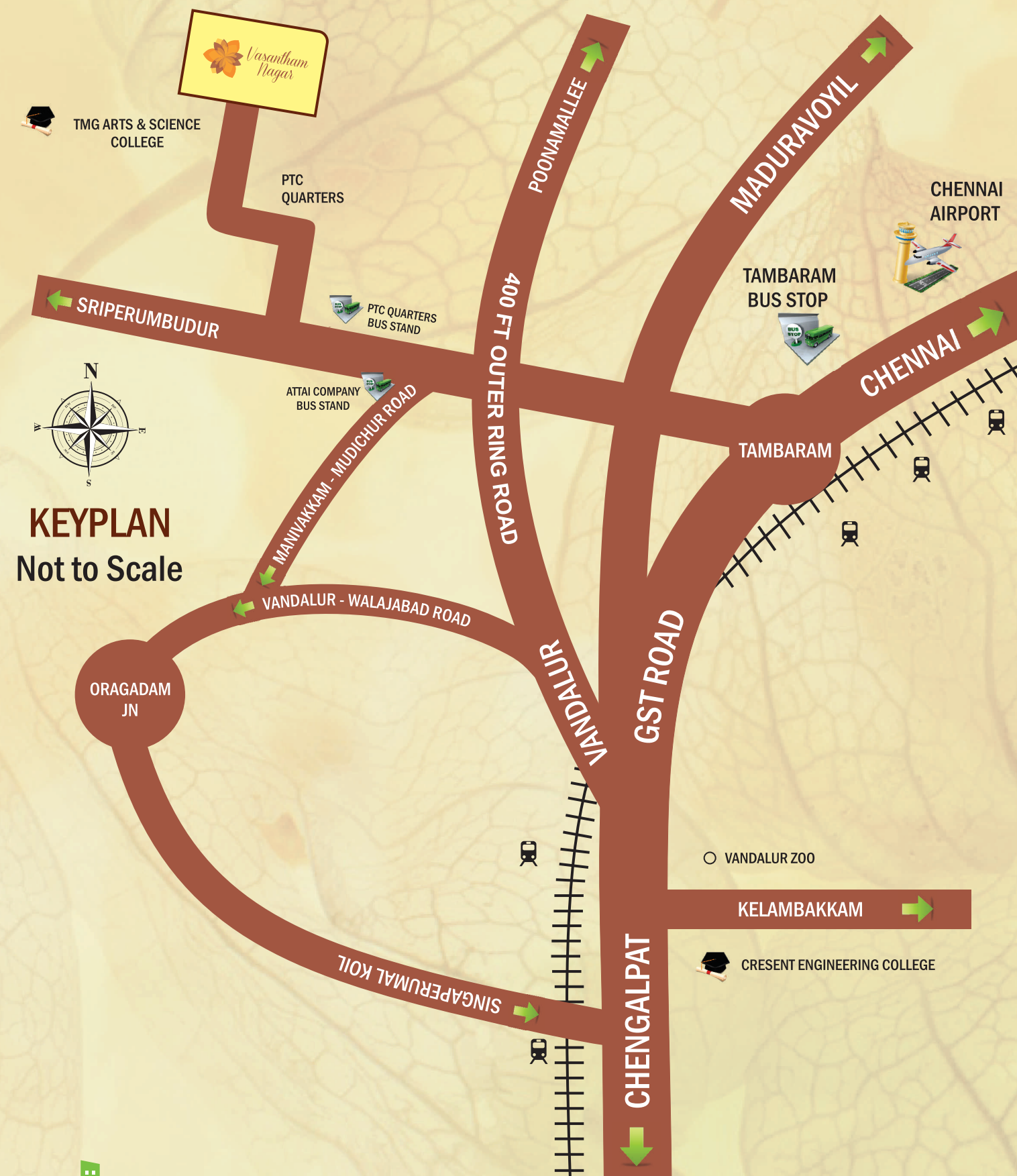
NEARBY RESIDENTIAL PROJECTS

- Marutham Gateway
- Marutham Heritage
- Hanifa Nagar
- Green City
- Kalam Nagar



NEARBY BANKS & ATMS

- Bank of Baroda
- Corporation Bank
- Canara Bank
- Indian Bank
- Syndicate Bank Atm
- Hdfc Bank Atm
- Indian Overseas Bank Atm



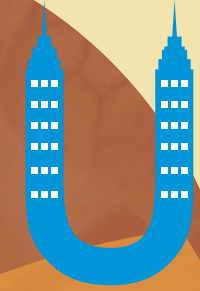
KEYPLAN
Not to Scale



Corporate Office:

#22/36, S.G. Pranavam Flats, 18th Avenue,
Ashok Nagar, Chennai-600083.
Website : www.vishwakproperties.in
Email : info@vishwakproperties.in

FOR ENQUIRIES & BOOKINGS CONTACT



SUPREME
PROPERTIES

*Vasantham
Nagar*

Residential Plots @ Tambaram



Vasantham Nagar

Vasantham Nagar is a prime area property in Tambaram with a great advantage of living and investing for near future. The plots are 2.90 acres in total, ranging from 708 to 2190 sqft. Its features includes 30ft and 23ft roads, Avenue trees, Sweet ground water at 20 feet. Here in Vasantham Nagar you can live a fortune life and also you can access all the places in chennai within a 10 minutes travel. It has the close Proximity with Sriperumbadur Industrial Hub, IT companies & various reputed companies, The plots are very easily accessible to Chennai International Airport.

We offer you the prime property for a very reasonable price, Invest here in Vasantham Nagar & enjoy the benefits in the future.

Features

- Clear Title
- Avenue Trees
- 23 & 30 Ft Road
- Ready for Dwelling
- Potable water
- Very close to schools, colleges and hospitals
- Surrounded by Individual Houses & Apartments

Sow your investment seed here....



Location Advantage

- 5 minute drive to Tambaram Railway Station
- 600 mts from Tambaram - Mudichure state highway
- 15 minute drive to Chennai International Airport
- Very Near to PTC Quarters & Attai Company Bus Stop
- 3 minute drive to 400ft Outer Ring Road
- 5 minute drive to Grand Southern Trunk Road



Not to Scale

LAYOUT OF HOUSE SITES IN SURVEY NO. 539/1 AND 540/1A OF VARADARAJAPURAM VILLAGE OF SRIPERUMPUDUR TALUK , KANCHIPURAM DISTRICT.

PLOT NO	PART OF SURVEY NO.	AREA SQ.FT
1	539/1	1047
2	539/1	1550
3	539/1	1200
4	539/1	1200
5	539/1	1150
6	539/1	1150
7	539/1	1250
8	539/1	1250
9	539/1	1250
10	539/1	1250
11	539/1	1150
12	539/1	1250
13	539/1	1250
14	539/1	1250
15	539/1	1250
16	539/1	1250
17	539/1	1250
18	539/1	1250
19	539/1	1500
20	539/1	1500
21	539/1	1813
22	539/1	2190
23	539/1	1691
24	539/1	1759
25	539/1	1519
26	539/1	1569
27	539/1	1619
28	539/1	1669
29	539/1	1719
30	539/1	1450
31	539/1	1000
32	539/1	1131
33	539/1	1106
34	539/1	1000
35	539/1	1750
36	539/1	1750
37	539/1	1200
38	539/1	1100
39	539/1	1131
40	539/1	1200
41	539/1	2000
42	539/1	1975
43	539/1	1167

PLOT NO	PART OF SURVEY NO.	AREA SQ.FT
44	539/1	1273
45	540/1A	788
46	540/1A	695
47	540/1A	708
48	540/1A	720
49	540/1A	733
50	540/1A	745
51	540/1A	755
52	540/1A	765
53	540/1A	778
54	540/1A	790
55	540/1A	800
56	540/1A	810
57	540/1A	823
58	540/1A	835
59	540/1A	843
60	540/1A	853
60A	540/1A	624
61	540/1A	800
61A	540/1A	535
62	540/1A	800
63	540/1A	800
64	540/1A	800
65	540/1A	800
66	540/1A	800
67	540/1A	800
68	540/1A	800
69	540/1A	800
70	540/1A	800
71	540/1A	800
72	540/1A	800
73	540/1A	800
74	540/1A	800
75	540/1A	800
76	540/1A	800
77	540/1A	800
78	540/1A	960
79	539/1, 540/1A	960
80	539/1	966
81	539/1	975
82	539/1	1012
83	539/1	1238
84	539/1	1041